



TIME ON EARTH

King Houndekpinkou

May 6 – July 29, 2017

Vallois America

Gallery Vallois America is proud to announce an exhibition “*Time on Earth*” by Franco-Beninese ceramist King Houdekpinkou. The exhibition will open Saturday, May 6th and will run through July 29, 2017. King will also present his work in a concurrent exhibition at Gallery Vallois in Paris.

In 2017, Galerie Vallois France will place the entirety of its exhibition programming under the sign of Benin. In the artistic and cultural exchanges it has initiated since 2012, in Cotonou (capital of Benin), Galerie Vallois is patron of the Arts and Culture Center in Loboouunkpa, a multidisciplinary space dedicated to contemporary creation in all its forms, directed by Dominique Zinkpè painter and renowned sculptor.

On the same site since 2015, the *Petit Musée de la Récade* is home to a permanent collection of “recades” or royal scepters and the site for diverse contemporary art exhibitions. In this context, our New York space will present the work of King Houdekpinkou in New York with an exhibition comprising around twenty works in ceramic.

Born in 1987 in the outskirts of Paris, King created a refined and spiritual body of work inspired by both Japan and his African roots. He studied at length the traditions of the non-enameled ceramics of Bizen (a region of Okayama), where King continues to visit every year.

On a technical level, King’s creative process implements an intimate and direct relationship with the material that he scratches, tears and repairs, thus creating simultaneously graceful and raw artworks. It is on the occasion of a first trip to Japan in 2012, that he discovers ceramics. He then became aware of the universality of clay, which encouraged him to return to his roots and his ancestors of Benin through works made from the most elemental of materials from the earth.

The exhibition ‘Time on Earth’ sacralizes precisely the earth, which constitutes a source of memory rich with knowledge and the vestiges left by man. Besides, the first ceramists were shamans who were able to read the oracles in the clay.

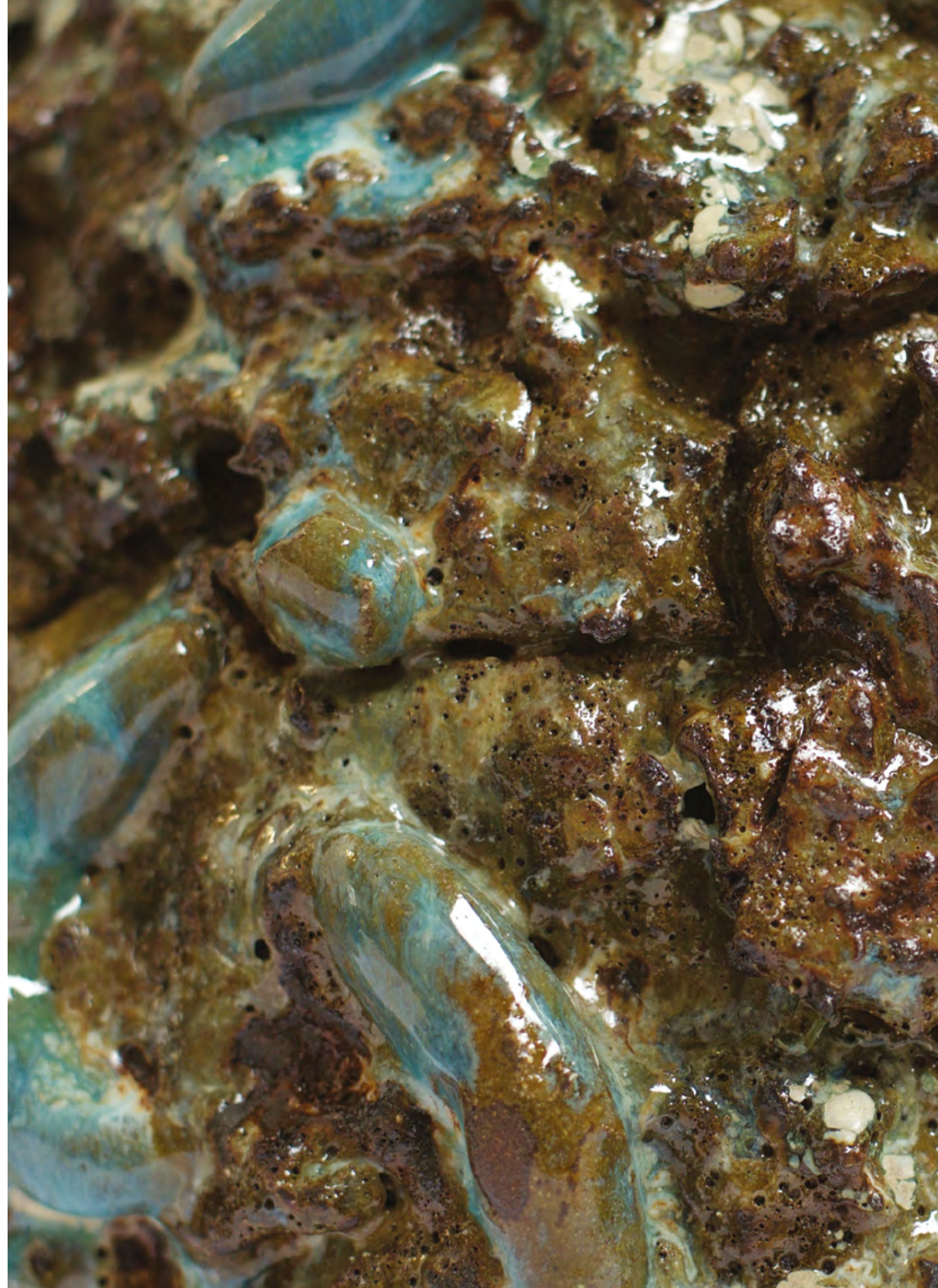
EMERALD GREEN SCULPTURAL VASE

2017

Height: $11\frac{1}{3}$ inches

Diameter: $9\frac{1}{2}$ inches

Black stoneware from Lanzarote (Canary Islands),
white stoneware from Burgundy (France),
clay from Sè (Republic of Benin). Emerald green glaze.



VIOLET SCULPTURAL VASE WITH GILDING

2016

Black stoneware from Lanzarote (Canary Islands),
white stoneware from Burgundy (France), clay from Sè (Republic of Benin),
multiple glaze overlays (purple, magenta and blue).

Height: 10²/₃ inches

Diameter: 12¹/₄ inches



YELLOW SCULPTURAL VASE WITH GILDING

2016

Black stoneware from Lanzarote (Canary Islands),
white stoneware from Burgundy (France), clay from Sè (Republic of Benin),
multiple glaze overlays (yellow, white and pink).

Height: 16¹/₂ inches

Diameter: 11 inches



ORGANIKA SCULPTURAL VASE

2017

Black stoneware from Lanzarote (Canary Islands),
white stoneware from Burgundy (France),
multiple glaze overlays (red, pink and magenta).

Height: 14^{1/3} inches

Diameter: 11^{1/3} inches



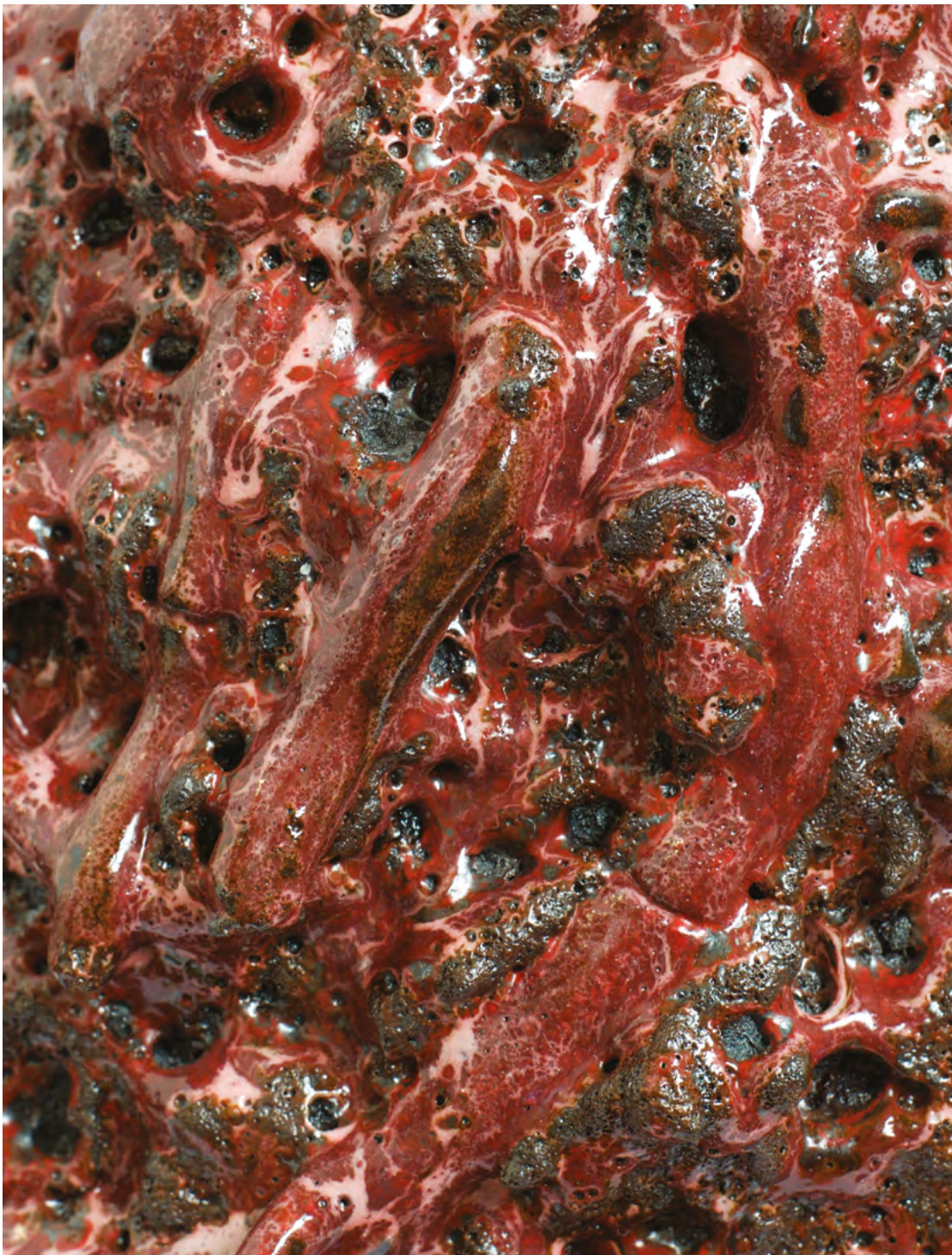
SAK(R)É VODOO SCULPTURE

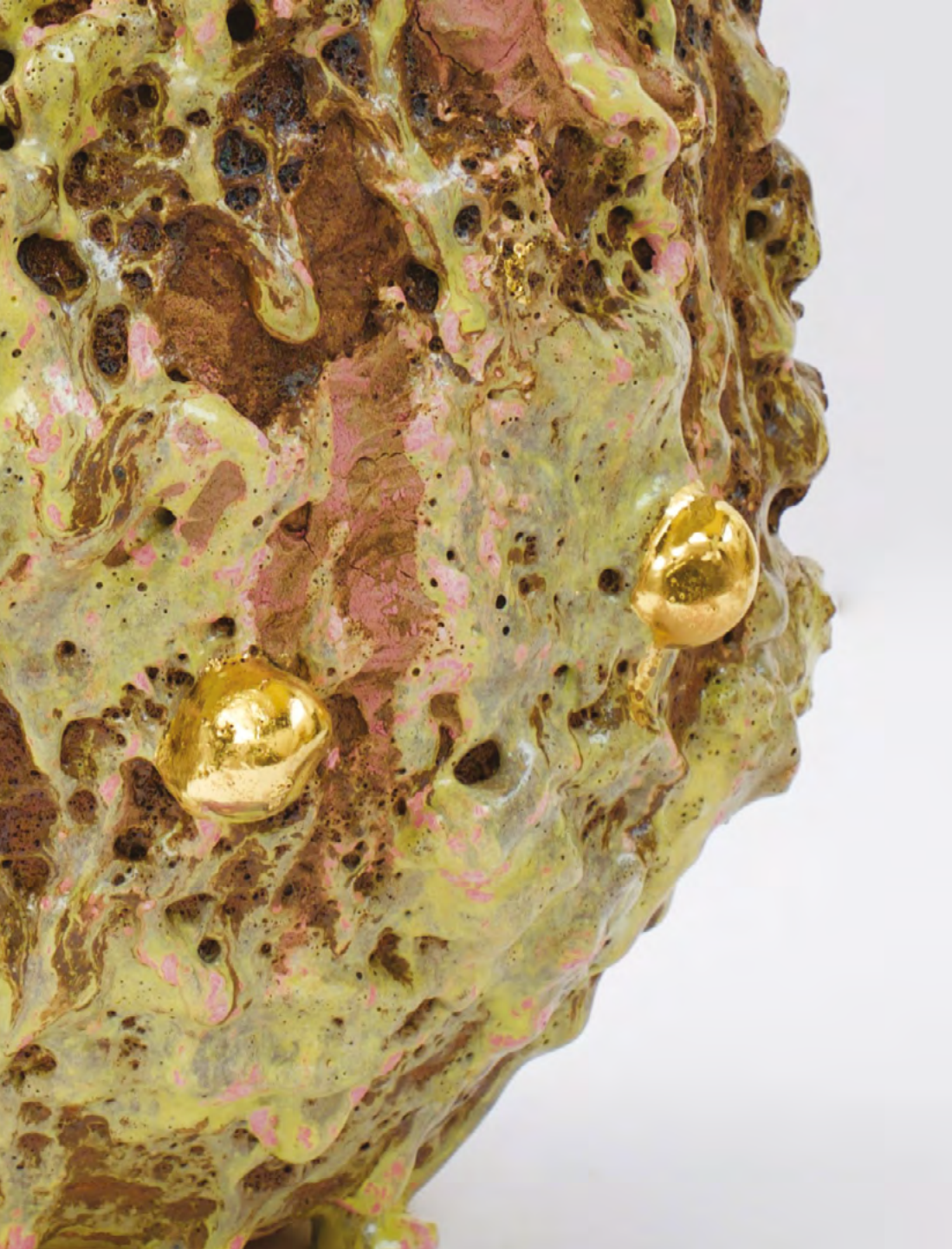
2016

Black stoneware from Lanzarote (Canary Islands),
multiple glaze overlays (blue, red and purple).

Height: 11^{1/3} inches

Diameter: 11 inches





May 6 – July 29 2017
Opening exhibition, Saturday May 6th at 3 pm

VALLOIS AMERICA

27 East 67th Street,
New York, NY 10065
T: 212 517 3820 | F: 1 212 517 4349
valloisamerica@aol.com
Tuesday – Friday 10 am - 6 pm
Saturday 10 am - 5 pm

PRESS OFFICE

In The Mood New York
Camille Wiar
T: 1 347 579 4359
inthemoodnyoffice@gmail.com

In The Mood Paris
Elodie Giancristoforo
33, rue des Artistes
75014 Paris
inthemoodrp@gmail.com



VALLOIS AMERICA